

DMExpress is the high-speed data management solution for ETL, data warehousing, BI, and other mission-critical applications. DMExpress replaces long-running processes so applications run faster. This can save many hours, even days, especially when processing large amounts of data.

For UNIX, Windows, and Linux, DMExpress integrates disparate data from multiple, heterogeneous sources. It transforms and aggregates the data at high speed to create consolidated views for reporting, analysis, or other downstream applications. Most importantly, DMExpress translates into tangible business value for your organization in both performance and lowering your total cost of ownership.

### FEATURES

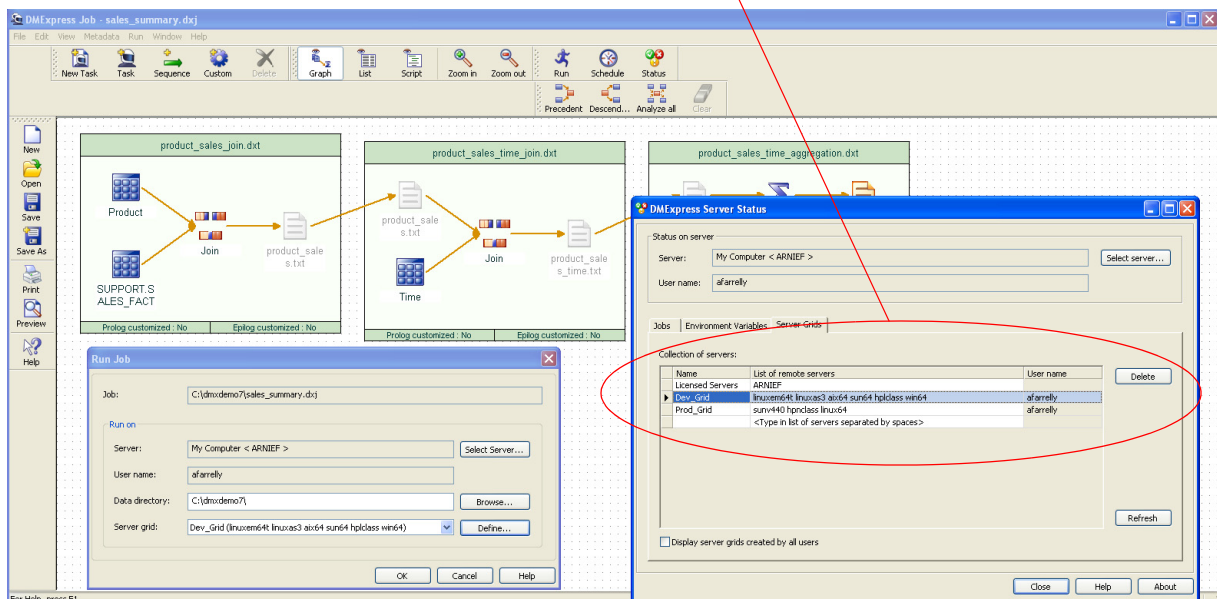
The separately licensed Grid Computing component provides a high-performance architecture for CPU-intensive applications by enabling users to harness the collective processing power of multiple computers. A grid is more reliable than individual computers, and the grid system automatically reconfigures in response to external influences. Grids, which can be heterogeneous, take advantage of unused resources on constituent systems.

DMExpress Grid Computing can speed CPU-intensive applications, such as:

- Financial models
- Engineering tests
- Scientific research

For additional information about DMExpress, visit: [www.syncsort.com/products/dmx](http://www.syncsort.com/products/dmx).

To define a DMExpress server grid environment, simply click on the Server Grids tab of the Server Status dialog and list the set of computer systems that you wish to use to distribute processing. When running your job on a server grid, DMExpress automatically separates your job into a number of parallel streams and dispatches those streams across the individual servers in the grid.



DMExpress Grid Computing